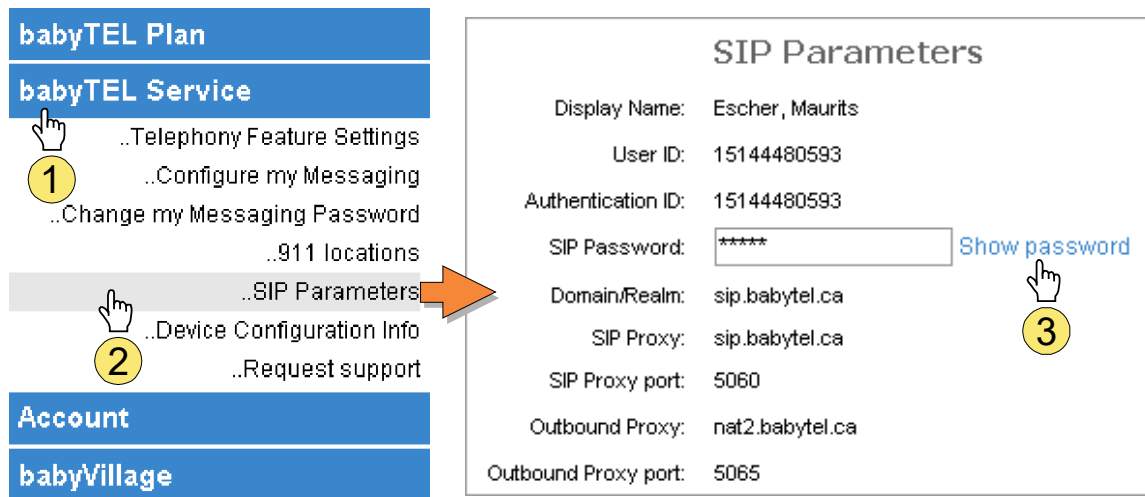


Introduction

The information in this document is intended as a general guide to help you set up the babyTEL service on your SIP compatible telephone system. It contains only babyTEL-specific parameters that need to be configured on your Dialogic Brooktrout SR140 software. For full and proper functioning of the babyTEL service and all other features, your equipment should be set up according to the detailed instructions provided by the manufacturer in their configuration guide. Make sure to use the latest Dialogic Brooktrout SR140 SDK.

Step 1 - Gather all the necessary information

Your User ID and Web password were provided to you in the Signup Confirmation email. Go to the babyTEL website (www.babytel.net) and login using your ID and password. (The login command can be found at the top right corner of the page.) Click on **babyTEL Service** to expand the menu and then click on **SIP Parameters**. A page similar to the example shown below will be displayed, with values relevant to your account.



babyTEL Plan

babyTEL Service

- ..Telephony Feature Settings
- ① ..Configure my Messaging
- ..Change my Messaging Password
- ..911 locations
- ② ..SIP Parameters
- ..Device Configuration Info
- ..Request support

Account

babyVillage

SIP Parameters

Display Name: Escher, Maurits

User ID: 15144480593

Authentication ID: 15144480593

SIP Password: [Show password](#)

Domain/Realm: sip.babytel.ca

SIP Proxy: sip.babytel.ca

SIP Proxy port: 5060

Outbound Proxy: nat2.babytel.ca

Outbound Proxy port: 5065

Please have this information at hand when you configure your system.

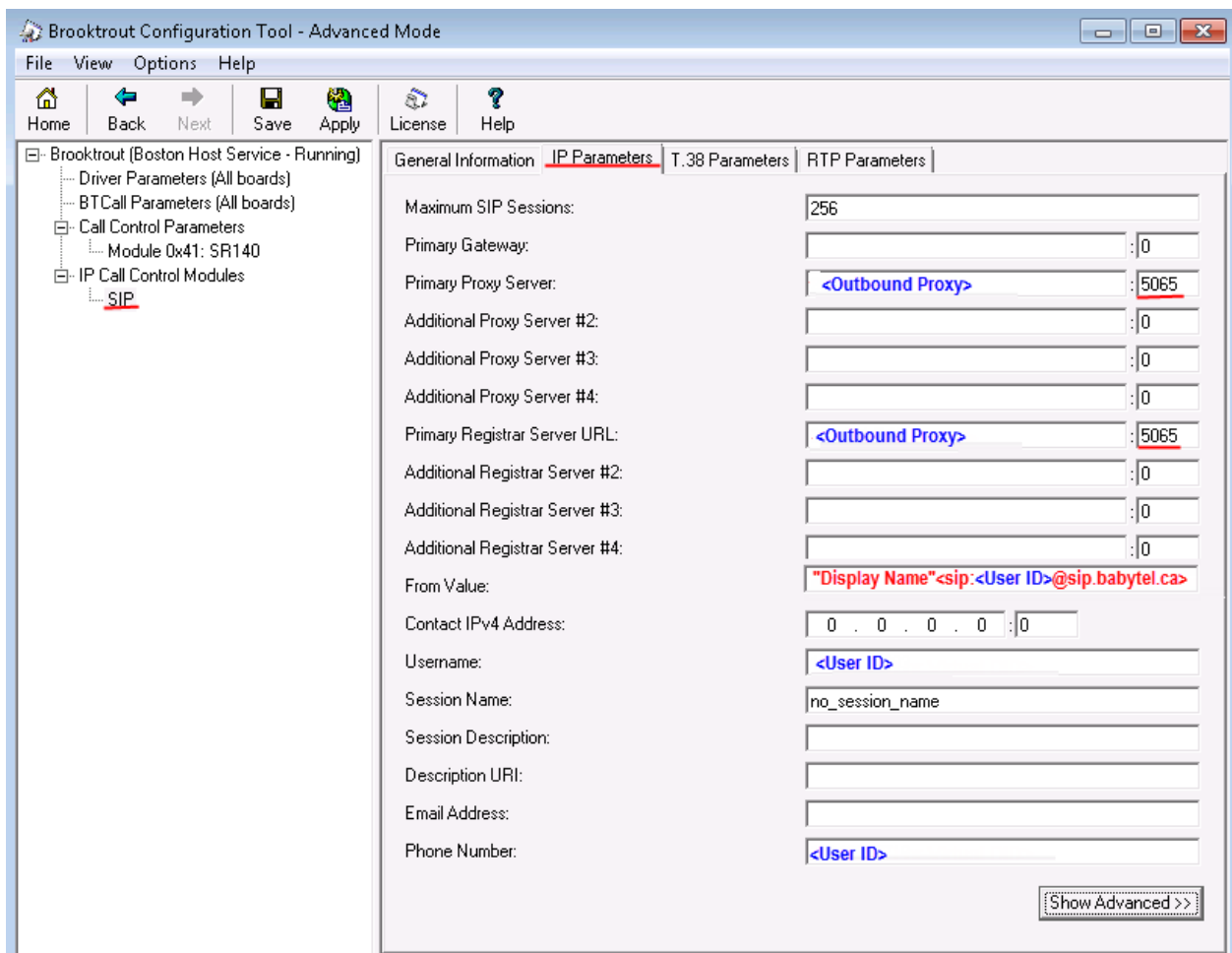
Step 2 - Configure the SR140 SIP Parameters Using babyTEL Information

Note: Values for the Items shown in **blue** should be taken from the SIP Parameters page for your account. When entering data, please do not include the brackets "<" and ">" shown above.

Note: When specifying the From Value, if the **Display Name** contains spaces or characters other than letters and numbers you must include it between quotes as in "Display Name".

Note: This configuration allows Brooktrout SR140 to use high-speed facsimile transfers up to 33,600 bps with other devices configured on V.34 with babyTEL accounts

Outbound Proxy Parameters:



SIP Parameters:

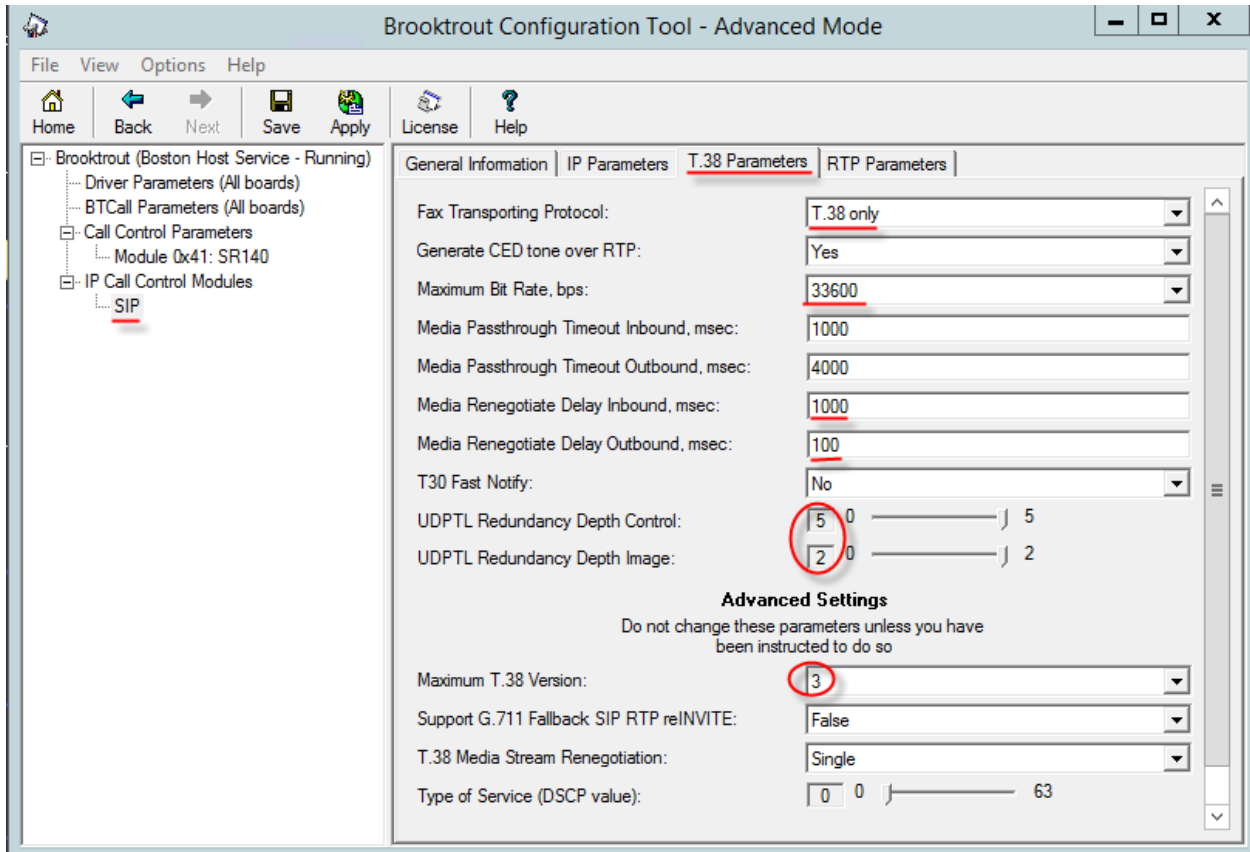
The screenshot shows the Brooktrout Configuration Tool in Advanced Mode. The left sidebar displays a tree view with the following structure:

- Brooktrout (Boston Host Service - Running)
 - Driver Parameters (All boards)
 - BTCall Parameters (All boards)
 - Call Control Parameters
 - Module 0x41: SR140
 - IP Call Control Modules
 - SIP

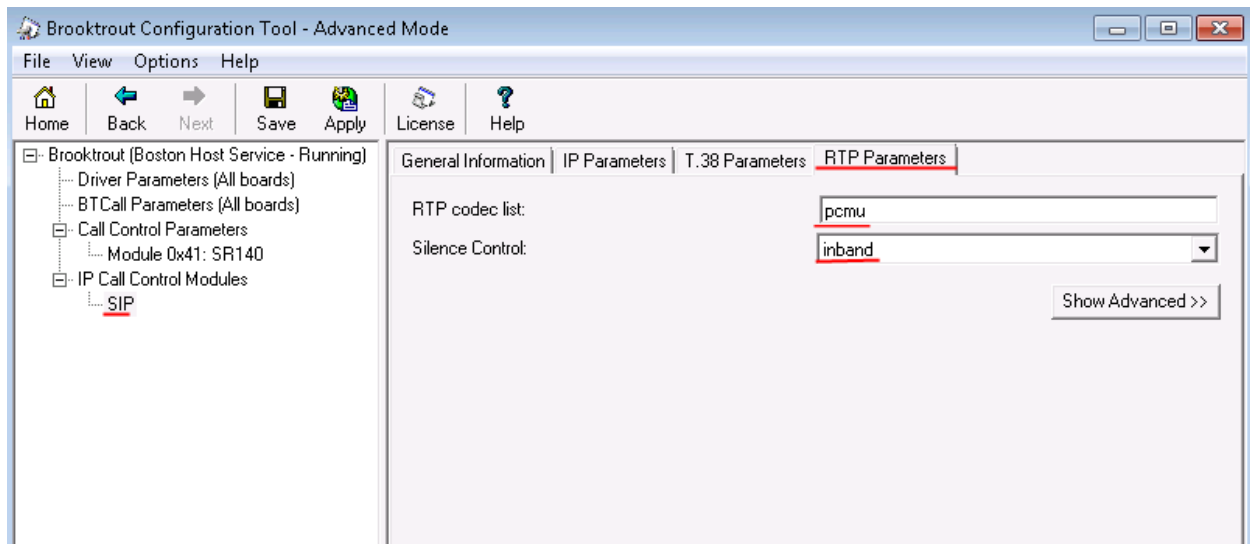
The main window displays the 'IP Parameters' tab, which is divided into 'General Information' and 'Advanced Settings'. The 'Advanced Settings' section is circled in red and contains the following parameters:

- Primary Registrar Server Address of Record:
- Primary Registrar Server Username:
- Primary Registrar Server Password:
- Primary Registrar Server Expiration:
- Additional Registrar Server #2 AOR:
- Additional Registrar Server #2 Username:
- Additional Registrar Server #2 Password:
- Additional Registrar Server #2 Expiration:
- Additional Registrar Server #3 AOR:
- Additional Registrar Server #3 Username:
- Additional Registrar Server #3 Password:
- Additional Registrar Server #3 Expiration:
- Additional Registrar Server #4 AOR:
- Additional Registrar Server #4 Username:
- Additional Registrar Server #4 Password:
- Additional Registrar Server #4 Expiration:
- Registration Interval:
- Registration Interval Delta:

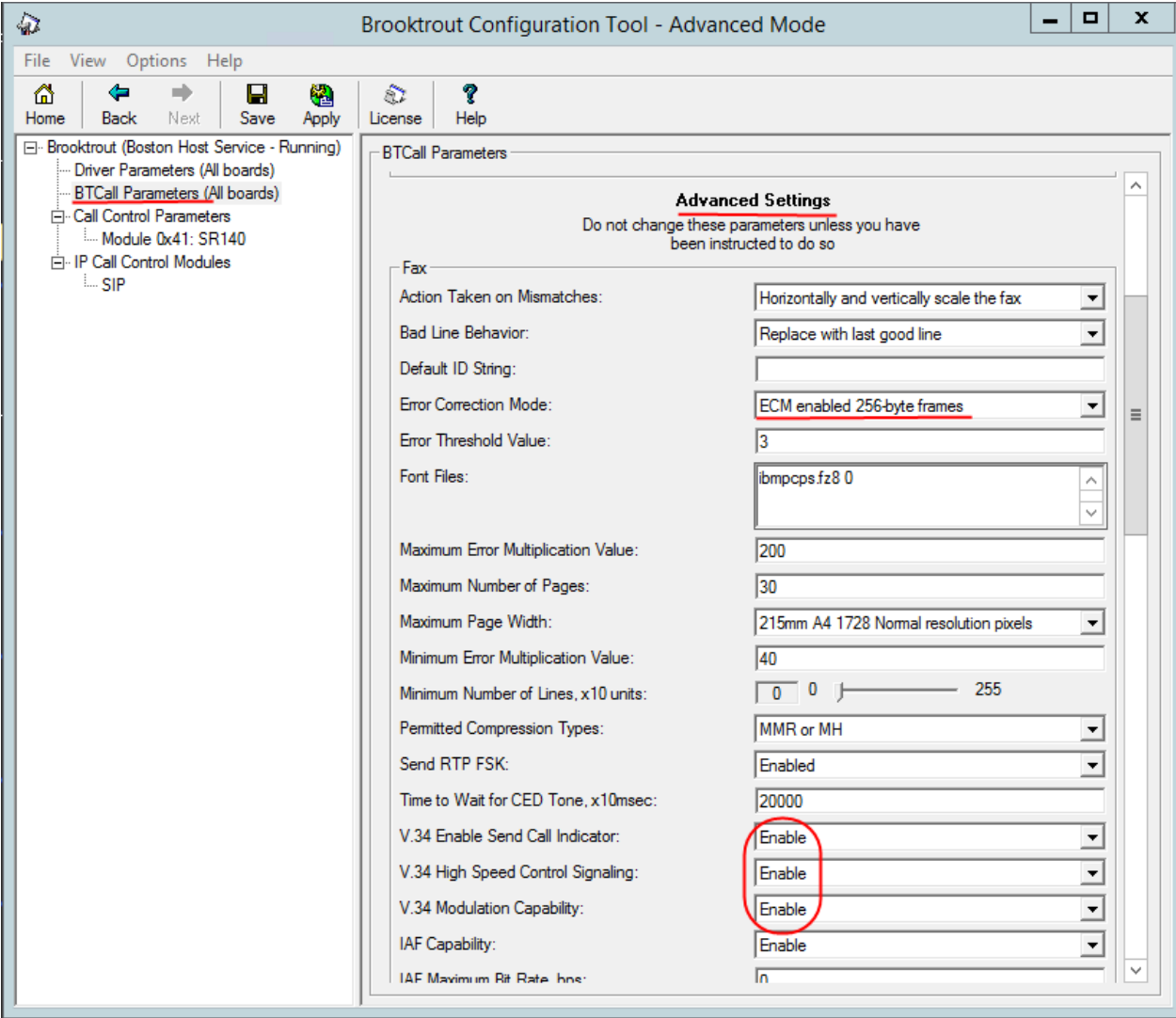
T.38 Parameters:



RTP Parameters:



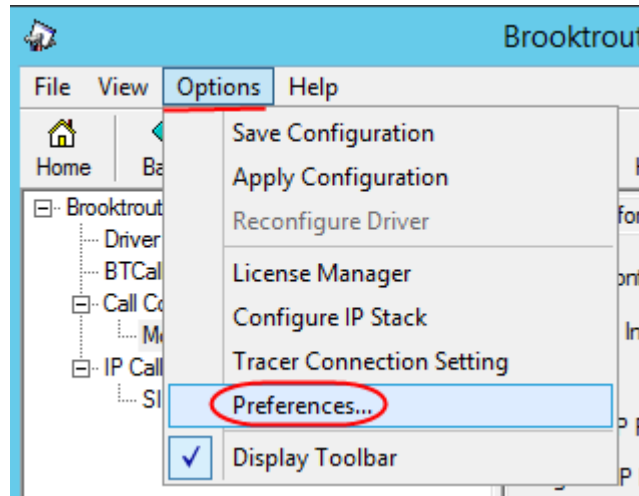
BTcall Parameters for V.34:



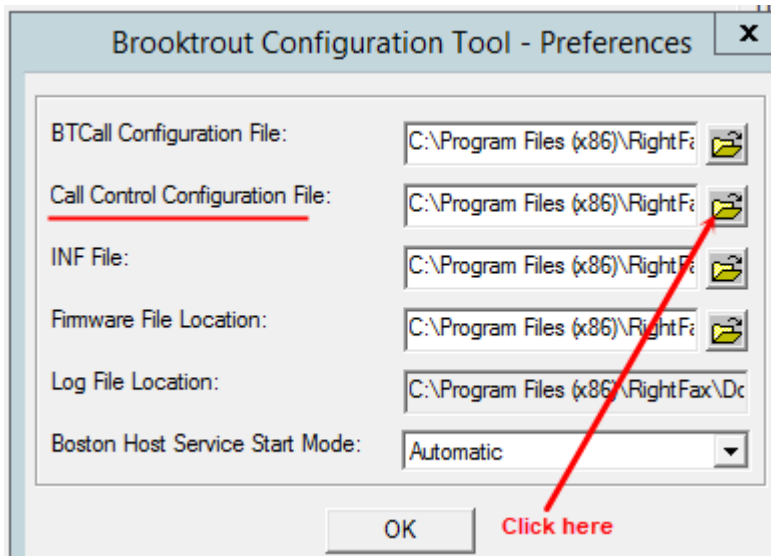
In the SR140 callctrl.cfg file, set (insert those lines if not present)

```
t38_fax_max_datagram_send=600
t38_fax_max_datagram_recv=600
t38_fax_max_buffer=1000
```

To find out where the configuration file (callctrl.cfg) is stored launch the Brooktrout Configuration Tool in Advanced Mode, and select the menu item Options -> Preferences...



You should see a dialog box similar to the one below:





Result:

```
[host_module.1/t38parameters]
fax_transport_protocol=t38_only
t38_fax_rate_management=transferredTCF
t38_fax_version=3
t38_max_bit_rate=33600
t38_fax_udp_ec=t38UDPRedundancy
t38_UDPTL_redundancy_depth_control=5
t38_UDPTL_redundancy_depth_image=2
media_renegotiate_delay_inbound=1000
media_renegotiate_delay_outbound=100
t38_fax_max_datagram_send=600
t38_fax_max_datagram_rcv=600
t38_fax_max_buffer=1000
rtp_ced_enable=true
t38_fax_fill_bit_removal=false
t38_fax_transcoding_jbig=false
t38_fax_transcoding_mmr=false
t38_t30_fastnotify=false
t38_type_of_service=0
```



Contact

If you require assistance you can contact us 24 hours a day, 7 days a week, by email at service@babytel.net.

You can also reach us by phone 7 days a week from 9 AM to midnight, Eastern Time at:

Canada	USA
Montréal: 514 201-6550 Toronto: 416 848-0990 Toll free: 1-877-258-VoIP (8647)	Toll free: 1-877-808-VoIP (8647)

Address: 1425 René-Lévesque, Suite 700, Montréal, Québec, Canada H3G 1T7

Website: www.babytel.net

Thank you for choosing babyTEL as your Internet Telephony Service Provider. We at babyTEL will continually strive to provide you a reliable service. As well, we will be regularly adding additional capabilities that you may find useful. Please keep up-to-date by visiting us at the babyTEL website. Pleasant surprises may await you.
