

## Introduction

The information in this document is intended as a general guide to help you set up the babyTEL service on your SIP compatible telephone system. It contains only babyTEL-specific parameters that need to be configured on your IP-PBX. For full and proper functioning of the babyTEL service and all other features, your IP-PBX should be set up according to the detailed instructions provided by the manufacturer in their configuration guide.

## Step 1 - Gather all the necessary information

Your User ID and Web password were provided to you in the Signup Confirmation email. Go to the babyTEL website ([www.babytel.net](http://www.babytel.net)) and login using your ID and password. (The login command can be found at the top right corner of the page.) Click on **babyTEL Service** to expand the menu and then click on **SIP Parameters**. A page similar to the example shown below will be displayed, with values relevant to your account.

The screenshot shows the babyTEL user interface. On the left is a navigation menu with sections: **babyTEL Plan**, **babyTEL Service**, **Account**, and **babyVillage**. Under **babyTEL Service**, there are several options: **..Telephony Feature Settings**, **..Configure my Messaging** (marked with a yellow circle '1'), **..Change my Messaging Password**, **..911 locations**, **..SIP Parameters** (highlighted with a grey bar and an orange arrow, marked with a yellow circle '2'), **..Device Configuration Info**, and **..Request support**. On the right is the **SIP Parameters** page, which displays the following information: **Display Name:** Escher, Maurits; **User ID:** 15144480593; **Authentication ID:** 15144480593; **SIP Password:** \*\*\*\*\* (with a **Show password** link, marked with a yellow circle '3'); **Domain/Realm:** sip.babytel.ca; **SIP Proxy:** sip.babytel.ca; **SIP Proxy port:** 5060; **Outbound Proxy:** nat2.babytel.ca; and **Outbound Proxy port:** 5065.

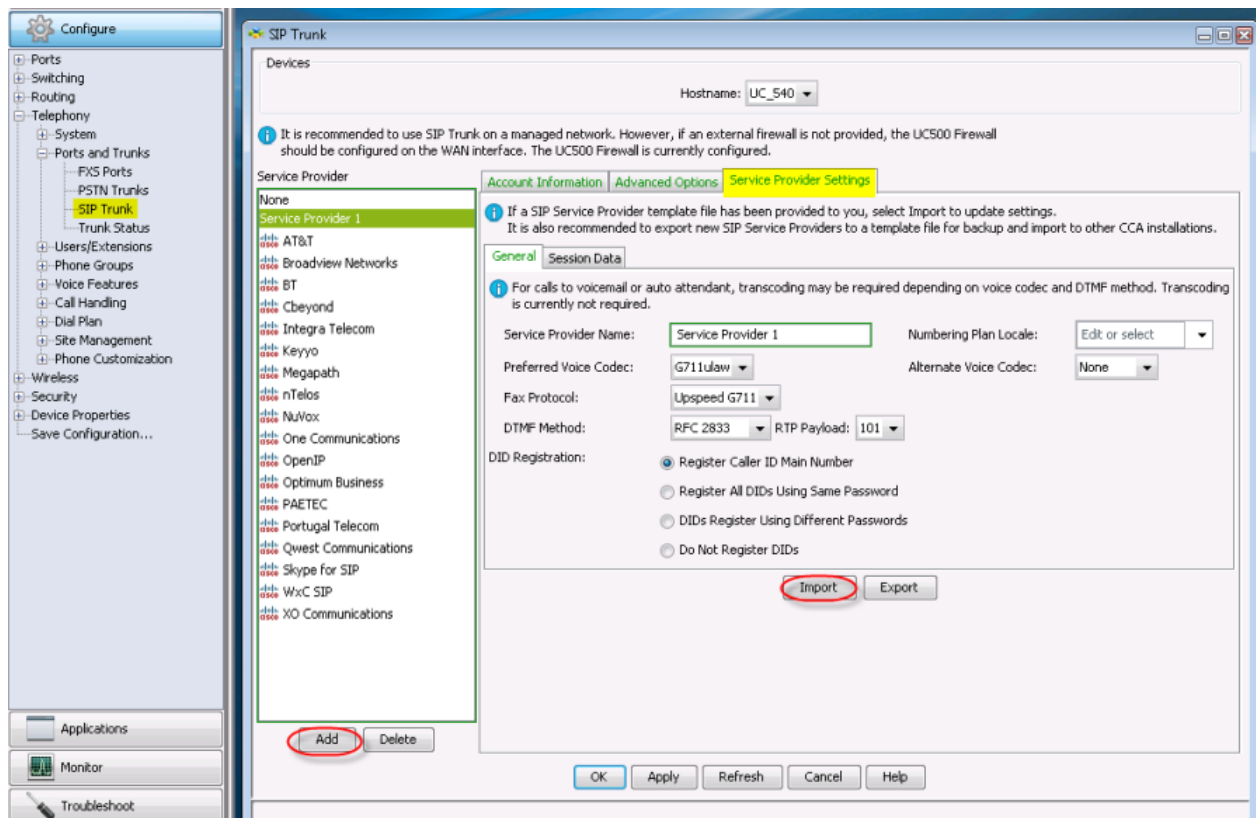
Please have this information at hand when you configure your system.

## Step 2 - Configure the SIP Trunk for UC540 system

There are two approaches to configure Cisco UC500-family's SIP trunk. In the first one, you fill out the parameters as they appear in Part 1. The second approach takes one additional step in loading a specific template for babyTEL SIP trunk with Cisco UC500-family. In this case, only the parameters related to babyTEL SIP trunk will appear, so you do not have to do a trial/error to know the parameters to be filled out. We strongly recommend using the second approach.

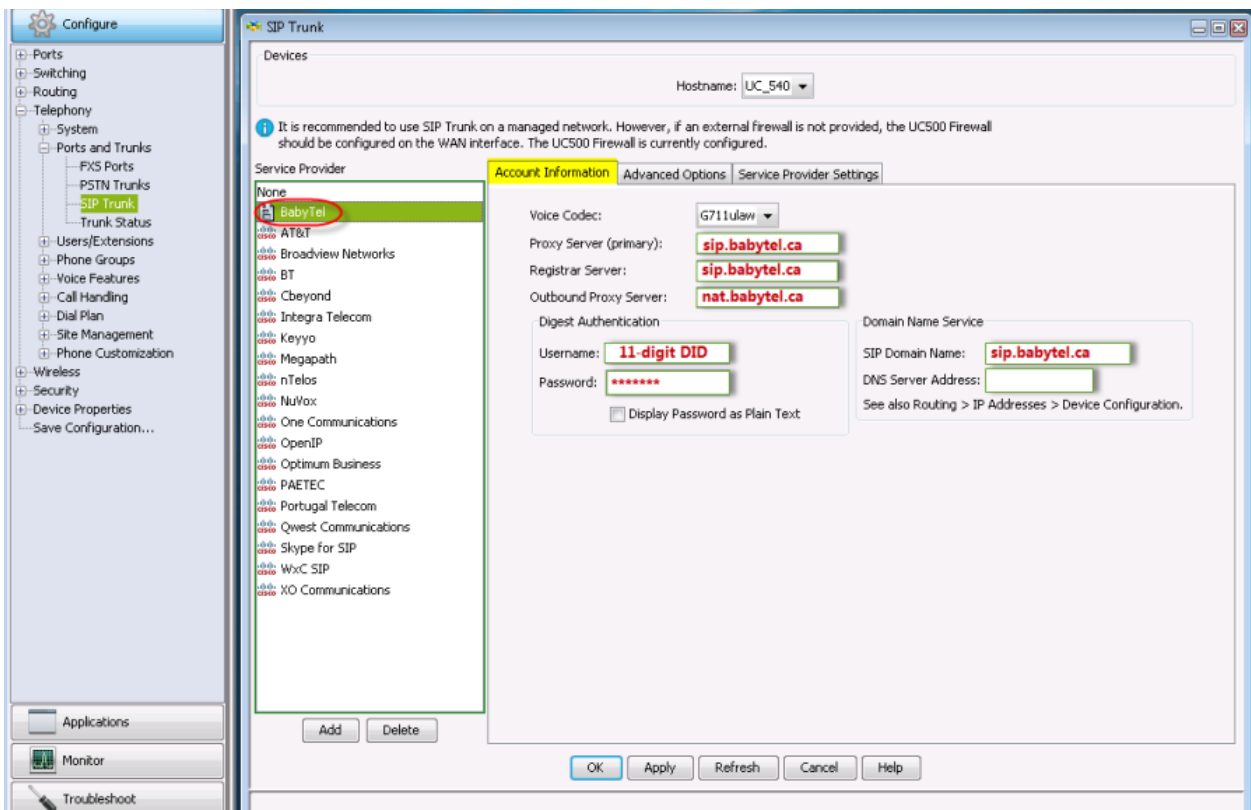
The XML template file will be sent to you in a separate e-mail, copy it to the PC that you will use run CCA. In order to load it to the Cisco UC500 family, follow the instruction described here. Please be sure to do a backup of your configuration file through CCA (or using CLI) before starting this procedure.

1. Launch CCA and connect to the UC540.
2. Choose **Configure --> Telephony --> Ports and Trunks --> SIP Trunk** tab



3. In the Service Provider pull down choose **Add**. A new Service Provider is created (Service Provider 1). Go to **Service Provider Settings**, click on the **Import**. A pop up window will allow you to browse the local PC for the XML file (in this example – the file is called CCA\_SIPProvider\_BabyTel.xml) and hit **OK**

4. If a UC540 already had a prior SIP Trunk configured, it is mandatory to first set the SIP Trunk pull down to **None**, hit **Apply**, and then chooses the new SIP Trunk provider that was uploaded. It may also require re adding Inbound DID handling if those DIDs were associated to the SIP Trunk.
  
5. If the file is uploaded correctly, the new option will show up in the SIP Trunk pull down – in this case it will be called something like “CCA\_SIPProvider\_BabyTel”. Next to the pull down is an option to browse if the user wishes to re upload the XML file with a newer revision
  
6. This “CCA\_SIPProvider\_BabyTel.xml” is now a permanent SIP Trunk Service Provider in this local CCA copy. This setting will be saved across CCA upgrades – this can now be used to populate the appropriate customer specific information for setting up a SIP Trunk.
  
7. Save again the configuration.
  
8. Specific parameters of babyTEL SIP trunk should be filled out look according to the information get within SIP Parameters on Step 1. Do NOT hit Apply yet. After filling them out the screen will like:





## babyTEL UC540 Configuration Guide

Proxy Server (Primary) : **sip.babytel.ca**  
Registrar Server: **sip.babytel.ca**  
Outbound Proxy Server : **nat.babytel.ca**

### Digest Authentication:

Username : 11-digit DID (Main number of your account)  
Password : SIP-Password (from Step 1)

### Domain Name Server:

SIP Domain Name : **sip.babytel.ca**  
DNS Server Address : (leave blank for the moment)

9. Advanced Options: Cisco recommends having the UC540 connected to Internet and that the DNS is able to resolve the Proxy and Registrar names (the same here) before hitting APPLY. If you can not, there is a chance that the ACLs will not be recreated correctly. They recommend as precaution, to save the running configuration before doing this step, and do not save until you are sure the existing ACL for FE 0/0 gets put back with the additional address here. Include the IP of Outbound Proxy: **198.38.7.37**. Click **Add**

The screenshot shows the configuration interface for the babyTEL UC540. It is divided into two main sections: Toll Fraud Protection and Timers and Retries.

**Toll Fraud Protection:**

- Information icon: Toll fraud protection prevents unwanted calls but requires the definition of all IP addresses allowed on the VoIP network. Internal networks and all servers defined under Account Information are already permitted. Additional IP addresses from your Service Provider may be entered below. If your Service Provider is unable to provide a complete list, this feature may be disabled.
- Additional Allowed IP Addresses table:

IP Address
198.38.7.37
- Enable Toll Fraud Protection (recommended)
- Total Rows: 1
- Buttons: Add, Delete

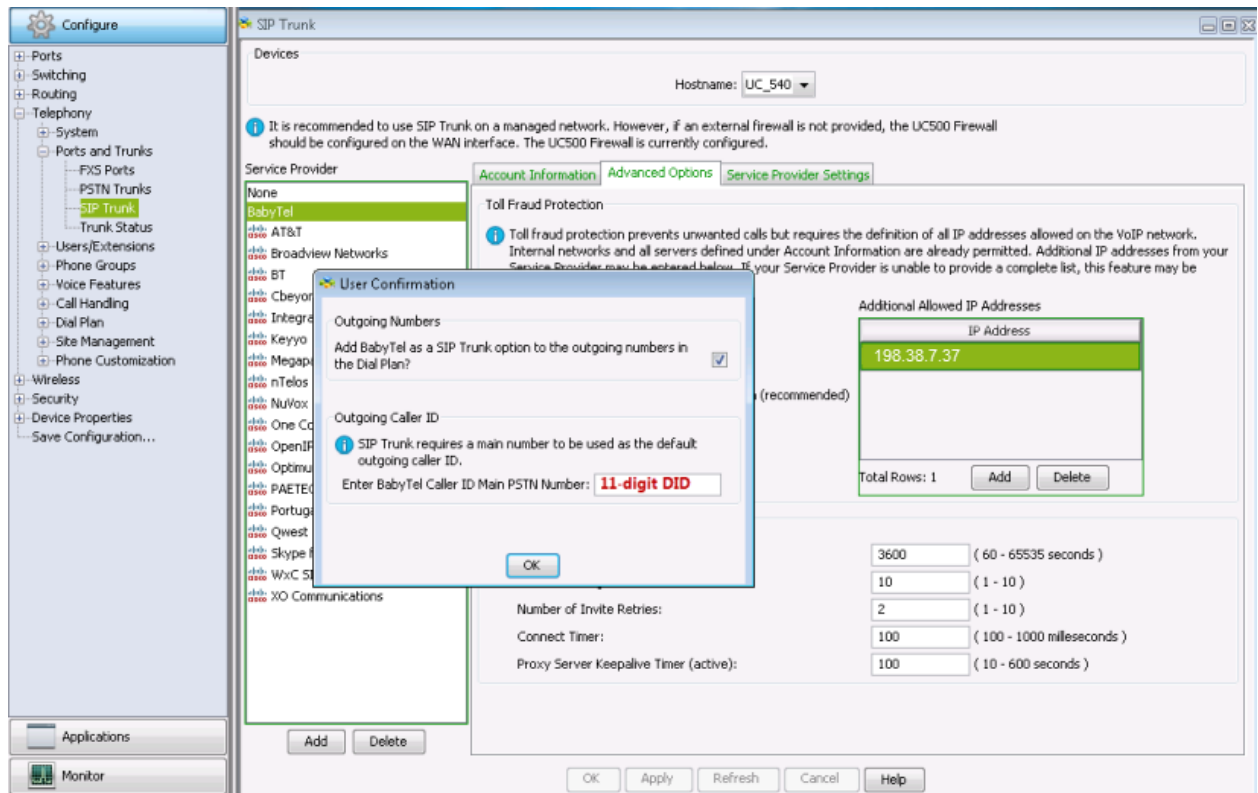
**Timers and Retries:**

Registrar Server Expiry:	3500	( 60 - 65535 seconds )
Number of Register Retries:	10	( 1 - 10 )
Number of Invite Retries:	2	( 1 - 10 )
Connect Timer:	100	( 100 - 1000 milliseconds )
Proxy Server Keepalive Timer (active):	100	( 10 - 600 seconds )



## babyTEL UC540 Configuration Guide

When you hit **Apply**, you will be asked for the DID to use for CLID (Caller-ID) for outgoing calls. Use the 11-digit DID (Main number of your account). It will also ask if you want the SIP trunk to be populated in the Outgoing dial plan.



10. Do a final backup using CCA or CLI.



### Contact

If you require assistance you can contact us 24 hours a day, 7 days a week, by email at [service@babytel.net](mailto:service@babytel.net).

You can also reach us by phone 7 days a week from 9 AM to midnight, Eastern Time at:

Canada	USA
Montréal: 514 201-6550 Toronto: 416 848-0990 Toll free: 1-877-258-VoIP (8647)	Toll free: 1-877-808-VoIP (8647)

**Address:** 1425 René-Lévesque, Suite 700, Montréal, Québec, Canada H3G 1T7

**Website:** [www.babytel.net](http://www.babytel.net)

---

Thank you for choosing babyTEL as your Internet Telephony Service Provider. We at babyTEL will continually strive to provide you a reliable service. As well, we will be regularly adding additional capabilities that you may find useful. Please keep up-to-date by visiting us at the babyTEL website. Pleasant surprises may await you.